



# IFSW Newsletter

ASIA & PACIFIC REGION

Issue 2, December 2015

## *This issue includes:*

### **Editorial**

#### **News from round-about**

- IFSW Asia Pacific Joint Report from IFAP Regional President & IFAP Member-at-Large: December 2015
- IFAP-APASWE Joint Regional Social Work Conference 2015, Bangkok, in pictures...
- Pre-Conference Workshop: Alternative Solutions in Social Work
- Consultation on the Global Agenda from the Asia Pacific Region
- YGUSWP Report...
- Papua New Guinea Social Workers Association Incorporated – Revived!
- Statement by IFSW Against the Administrative Detention of our Social Work Colleagues in Israeli Prisons – 6th September 2015
- IFSW & COSW Executive Meeting, London
- Upcoming Events in 2016
- Upcoming Conferences in 2016

## *Editorial*

Another eventful year is over but the good and bad memories of events, economic and political brouhaha, disasters and human tragedies are carried over into 2016. The New Year is expectant of fears that world economy, political and social security, and environmental disasters may take a further toll on populations. Yet, the new year also brings hope that humanitarian goodness and sanity will prevail, that governments will manage better, that more appropriate, effective and efficient planning and intervention will reduce the risks of disasters and loss and damage to human lives and livelihood.

In this regard, it is encouraging to note the action taken by the United Nations Social and Economic Commission for Asia and the Pacific. Its recently launched Asia Pacific Disaster Report 2015 – Disasters Without Borders, *“provides an overview of the state of disaster resilience in Asia-Pacific region, and places disaster risk reduction at the heart of*

*sustainable development. It identifies emerging new risks in the region and the sectors that are most at risk. The report focuses on cross-border disasters, such as earthquakes, droughts, tropical cyclones and floods, and highlights that only by coming together in the spirit of cooperation can the Asia-Pacific region hope to become truly disaster resilient. The report identifies several neglected areas of disaster risk reduction that need to be addressed urgently. Drought, a forgotten disaster in Asia-Pacific, pushes vast numbers of people into debt and poverty. The report shows how the impact can be mitigated by treating drought as a long-term, recurring risk. The report also analyses the value of early warning systems and maps out how to provide right information to right people at the right time. The report concludes that while investing in disaster risk reduction is proven cost effective, the political commitment has not transformed into adequate actions on the ground.”*

Realistically there is a lot more to be done and in its own way IFSW-AP attempts to address some of the weak areas by investing in enhancing the preparedness and capacities of social workers in the Asia Pacific. So far, it has encouraged and supported 5 workshops on Disaster Response with another one planned for January 2017 in Malaysia.

Looking back we had a wonderful experience during the Regional Joint Conference in Bangkok, so thank you to the organisers and supporters for making many things possible like providing space and time for IFSW-AP to hold its General Meeting, Global Agenda Meeting and Pre-Conference Workshops, not forgetting the generous hosting of an enjoyable dinner on the White Orchid Cruiser!

In this issue we also take note of social workers who are being politically oppressed and pray for their release soon. We are happy to welcome Nepal and India into the fraternity as well as to know that the Papua New Guinea Social Workers Association is revived.

This issue is delayed but not too late to wish everyone a Happy and Peaceful New Year!

*IFSW Asia Pacific Joint Report from  
IFAP Regional President & IFAP  
Member at Large: December 2015*



**Mariko Kimura**  
IFAP President



**Rose Henderson**  
Member-at-Large

**Greetings from the President and Member-at-Large**

Since the two of us were elected to the positions of Regional President and Member-at-Large in July 2014, we have been fulfilling our duties at the Asia-Pacific Region of IFSW as a team. We sincerely thank everyone for their support, since we have been able to manage our work only with assistance from the Executive Committee and our member countries as well as backup from the Japanese Coordinating Body for IFSW Membership. We truly hope that 2016 will be a year in which the networks of social workers at IFSW-AP and IFSW itself grow stronger and social workers are empowered worldwide. Furthermore, we wish that it will also be a year for us to work for peace and equality all over the world and for the promotion of human dignity.

The President wishes to continue to attend as many events organised by member associations as possible, get to know the activities carried out by social workers and their organisation as much as possible, and communicate the unique situation and the common themes to as many member nations as possible, and additionally make an appeal for our cause to the global organisation!



**Season's Greetings to you !**  
**May your new year be filled with joy and happiness!**  
Mariko Kimura, IFSW Asia Pacific E-mail:mkimura1951@gmail.com

▪ **This year's main news**

Unfortunately, many disasters hit our region this year too. The Asia-Pacific Region is frequently affected by disasters, so skill development for social work professionals and the establishment of an Asia-Pacific regional aid network is and stays a most important task for us. Our next collaboration is with the Indonesian Association of Social Workers and the Ministry of Social Affairs to hold a Learning Forum Program on Psychosocial Support in Disaster Situation: The Roles and Skills of Social Workers in Asia Pacific. It was held from 12-14 January 2016 in Jakarta.

▪ **Most recent news**

(1) The Asia-Pacific Regional Joint Conference on Social Work hosted by APASWE and IFSW-AP was held in Bangkok at the Dusit Thani Hotel from 22<sup>nd</sup> to 24<sup>th</sup> October 2015. The Conference saw the participation of more than 250 delegates from 25 countries with nearly 100 presentations in papers and posters on the theme 'Growth & Crises: Social Work & Policy Discourses'.

(2) Preceding the conference, we organised 2 Pre-Conference Workshops on 20<sup>th</sup> October 2015 by utilising IFSW's Development Fund. More than 170 people from Korea, Japan, Philippines, India, Nepal and Bangladesh participated including Thai social workers. The topics covered 'Gender Sensitivity in Social Work Practice' and 'Promoting the Rights of Children' with specific focus on 'Child Labour and Children on the Move'. Michiko's brief report is included below.

(3) Consultation on the Global Agenda was held on 22<sup>nd</sup> October 2015 during the AP Regional Joint Conference in Bangkok. Dr.Bala Raju Nikku's report is included in the following pages.

(4) A proposal for the regional amplification of the global social work definition was compiled through joint efforts by APASWE and IFSW-AP at the Bangkok conference. This version will undergo public review until February 15<sup>th</sup> 2016 before the proposal is finalised at the next regional joint conference.

(5) Celebrating new IFSW member countries: We were honoured to welcome Nepal and India as IFSW members. With regard to India's admission, 6 professional social work associations agreed to form a national coordinating body called the Indian Network of Professional Social Work

Associations. Their membership was approved in early October 2015.

(6) Additionally, the South Asian Conference of Professional Social Workers was organised by Karnataka Association of Professional Social Workers (KAPSW) and Department of Social Work, Christ University in Bangalore on 27<sup>th</sup> and 28<sup>th</sup> August 2015 with 387 people from all over India participating. The IFSW-AP President was invited to inaugurate the conference.

(7) We constantly hear news about the flow of Syrian refugees and asylum seekers to Europe. Several governments, especially EU nations and other European states as well as North American countries, etc. are making statements about accepting these people. Social workers and refugee support organisations will probably be actively engaged in specific assistance in the future. At the same time, we have to watch humanitarian efforts and responses by national governments very carefully.

(8) The Hong Kong Social Workers Association completed the Chinese version of the new Global Definition and it has already been uploaded to the IFSW website. It will hopefully be of reference to many colleagues all over the world who have Chinese cultural origins. We want to thank the HKSWA for their most meaningful effort.

(9) The Executive Committee is proposing for IF-AP to have its own logo and would therefore like to invite members in the region to submit designs for the Committee to consider. We are looking forward to receiving creative and inspiring ideas which reflect social work in the Asia Pacific region.

(10) IFAP and APASWE held discussions during the Conference in Bangkok to consider China Association of Social Workers' sole application to host the next regional joint conference in 2017 and this has been generally confirmed. Further information will be announced in due course.

**Reported by:**

**Mariko Kimura, IFAP Regional President**  
[Mkimura1951@gmail.com](mailto:Mkimura1951@gmail.com)

**Rose Henderson, IFAP Regional Member-at-Large**  
[Rose.Henderson@cdhb.health.nz](mailto:Rose.Henderson@cdhb.health.nz)

## *IFAP-APASWE Joint Regional Social Work Conference 2015, Bangkok, in pictures...*



Organising Committee Members and Conference Delegates



Closer look at some of the delegates



Some of the happy delegates with the Organising Chairman



All Heads on stage



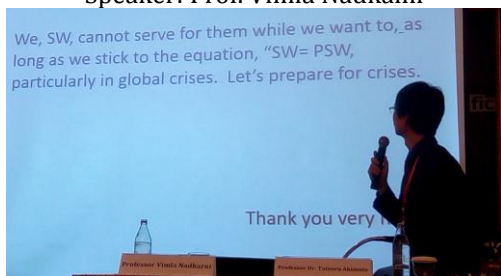
Malaysian delegates with Organising Chairman



Speaker: Emeritus Prof. Jim Ife



Speaker: Prof. Vimla Nadkarni



Speaker: Prof. Dr. Tatsuru Akimoto



Delegates on the Sea Cruiser

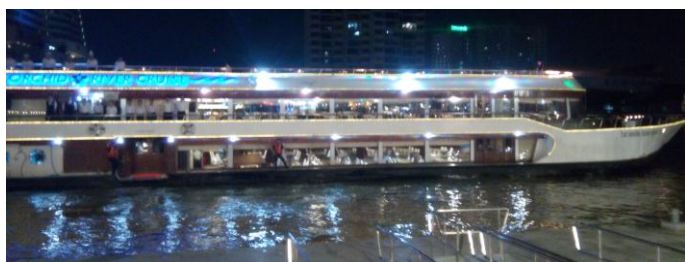
\*\*\*\*\*

## *Pre-Conference Workshop: Alternative Solutions in Social Work Practice*

On October 20<sup>th</sup>, two Pre-Conference Workshops were organised by IFSW-AP with the collaboration of Thailand Association of Social Work & Social Welfare Education (TASWE) at Dusit Thani Hotel. There were more than 170 participants from 12 different countries at the workshop. The main theme was Alternative Solutions in Social Work Practice. The topic for Session I was Gender Sensitivities in Social Work Practice presented by panelists, Manuel da Quinta from UNAIDS Bangkok and Kath Khangpiboon from AP Transgender Network. The topic for Session II was Promoting the Rights of Children (Child Labor and Children on the Move). The speakers were M.V. Sriganesh from India, Dr Bala Raju Nikku from Nepal, Md Habibur Rahman from Bangladesh and Sompong Srakaew from Thailand.



Prof. Dr. Ismail Baba, Dr. Fentiny & Ms Naomi Masilamany



Dinner on the White Orchid Cruiser



IFSW-AP Ex-Co members enjoying a break



Speakers & participants at the Pre-Conference Workshop

Rose Henderson summarised the workshop as follows: “There are great similarities in the industries’ exploitation of children and migrant labour across India, Nepal, Bangladesh and Thailand as well as other countries. There is a need for social work educators and practitioners to raise the profile and the role of the profession to promote the elimination of child labour and alternative means of addressing poverty. The third theme from there was a call for international linkages through IFSW to unite against child labour and to free the children so they can pursue an education and a career of their own choice.”

**Reported by: Michiko Hirata, Treasurer  
IF-AP Executive Committee  
mhirata33@nifty.com**

\*\*\*\*\*

## **Consultation on the Global Agenda from the Asia Pacific Region**

*Hosted by: IFSW-AP and APASWE  
Moderated by: Ms Rose Henderson & Dr. Bala Raju Nikku on 22<sup>nd</sup> October 2015*



The consultation workshop went very well with active participation of 25 social work educators, practitioners and representatives from national associations from all over the Asia Pacific Region. Altogether, eleven presentations were made.

India	Sriganesh MV	Indian Network of Professional Social Work Associations
Nepal	Bala Raju Nikku	Nepal School of Social Work
Bangladesh	Habibur Rhaman	Bangladesh
Malaysia	Elsie Lee	MASW
Philippines	Jarwin Navarro	PASWI
Indonesia	Nurul Eka Hidayati	IPSPI
Japan	Machiko Ohara	Japan Coordinating Body for IFSW Membership
Korea	Dr. Nikku on behalf of KASW	KASW & Korea Council on Social Welfare Education
New Zealand	James Makowharemahihi	ANZASW
Australia	Karen Healey	AASW
Hong Kong	Irene Leung Pui Yiu	HKASW



Nurul Eka presenting Indonesia’s GA Report

At the end suggestions and comments were provided by the participants. It was agreed that by the end of the December the representatives / presenters will be sharing a further detailed report from their countries, schools of social work and associations. The idea is that we shall build on the momentum that has been generated to date and send a brief report to the global committee but the detailed report from the Asia Pacific will be made available for public consultations via website, etc.



Question from the floor

The major themes that emerged from the presentations are: poverty, furthering human dignity by enhancing mental health services, strengthening social work national associations by bringing state associations together, social work practice innovations and lobbying with government and other non-state actors.

It was decided that we write the report using the emerging themes (rather country-wise) from the region for the global report. For example, Indonesian social workers have focused their efforts on increasing access to mental health services by ordinary citizens and through which they would like to address the human worth and dignity of the people. In Nepal, the social work educators and students, being disaster victim survivors themselves, are involved in assisting other individuals and communities in surviving and building resiliency among them using existential and humanistic social work approaches.



Group of IFSW-AP Delegates after the GA Consultation

\*\*\*\*\*

## *YGUSSWP Report...*



### **Introduction**

The humanitarian situation in Yemen has deteriorated following the escalation of conflict beginning on 26 March 2015, resulting in a breakdown in the provision of basic social services. In January 2015 some 15.9 million people in Yemen (61% of the population) were in need of humanitarian assistance, including 7.4 million children. The current crisis is exacerbating the vulnerabilities of these populations as well as creating new humanitarian needs for people not previously in need of assistance. For example, prior to the conflict, there were 847,445 children under 5 suffering from acute malnutrition, and 160,629 children from severe acute malnutrition.

In November 2015 an estimated 14 million people lacked access to health care (including 522,000 pregnant women), 14.5 million are in need of food security, 19.3 million people require

access to safe drinking water and sanitation, 1.3 million children are at risk of malnutrition (320,000 of which are at risk of severe malnutrition), 2.8 million require shelter and NFI. The recent conflict has seen the closure of health and nutrition facilities in some areas. Some 2 million children have been affected by the closure of over 3,700 schools. Child rights violations continue to be on the rise with alarming trends in the recruitment and use of children in conflict. Priority humanitarian needs include medical supplies, safe drinking water, fuel, and food. Mass casualty management is critical and protection remains a grave concern. Due to the conflict that started in March 2015, the YGUSSWP planned to respond to the children's needs as they are the most affected and vulnerable people in the community.

We have conducted a child protection rapid assessment in the 4th week of May 2015 in Sana'a province among 5 districts for the purpose of identifying the effects of the conflicts on children and the child protection needs to inform planning for the response. This assessment was funded by UNICEF office in Sana'a, and the YGUSSWP participated in editing the CPRA questionnaire tool, collecting the information, analyzing the data and sharing the final report of the study with UNICEF.

Based on the CPRA findings we found that there were significant changes in the behaviors of the children and their parents due to the conflict in Yemen, and for that the YGUSSWP have planned and responded to the children's needs through the CFS (Child Friendly Space) project funded by UNICEF.



Children drawing activity in Hamdan CFS

YGUSSWP has been a partner with UNICEF in establishing and implementing a CFS in Sana'a and we are looking forward to becoming a

strategic partner for UNICEF in PSS in Sana'a and Amanat Alsamaih. We have successfully established 4 CFS which conducted activities for the children during the period of August – October 2015 in Sana'a and among the 4 districts of Arhab, Nehm, Hamadan and Bani Hashish.



Children in Hamdan CFS

Through these protected environments we have enabled the children to participate in organizing CFS activities where they played and gained knowledge, learn to express themselves, and return to their normal lives. We have also linked the children with the society and contributed towards the implementation of development programs for self-reliance, and the protection of children. In the 4 CFS we have succeeded in providing psychosocial support for more than 700 children (males and females) as stated in our reports. We have conducted more than 30 awareness sessions on CP issues for more than 800 parents, community leaders and youth (both males and females) from the 4 districts. We have established 4 community based protection committees and we have raised their awareness on child protection issues and these committees have played a key role in sensitizing the communities on CP issues, identified vulnerable children, and promoting sustainability of the CFS. However, most of the basic services have been closed since the conflict started.

In addition, we have conducted a mapping of services in Sana'a and Amant Alasmah, and we have developed a referral system that enhances access to available services. In the 4 districts through the CFS we have identified and responded to the children's needs and referred them to services providers, enhanced their families' awareness, offered school bags, inclusion support and provided PSS for children

and other interventions. We have issued birth certificates for 300 children, identified 46 disabled children and referred them to the Fund Care and Rehab for Disabled People which issued ID cards to entitle them to certain benefits from the Fund. We have identified 48 children who were out of the school and conducted awareness sessions and provided them with school bags and other interventions; we have identified and supported 5 early marriage cases, 10 GBV issues, 10 nutrition cases, 1 sexual abuse case, and we have provided PSS for 6 cases experiencing psychosocial issues from the conflict.



Children having drawing activity in Bain Hasiash CFS

Now there is an urgent need to follow up the 126 cases that we have supported and referred to other humanitarian actors and Government institutions as they are still in need of further services. Moreover, during 17-18 of November, we identified new vulnerable cases in need of urgent intervention for symptoms of psychosocial distress due to the conflict, other cases physically affected by the airstrikes, and new cases of disabled children who need support. The YGUSW is planning to respond to their needs in our upcoming project that we hope UNICEF will continue to support.

The YGUSWP plans to establish another 2 CFS, 4 teenage committees/clubs, and 2 mobile CP teams of social workers in Sana'a province. The YGUSWP will improve and devolve the CFS activities and tools to receive physically and other

disabled children, conduct training for the CFS volunteers on how to deal with disabled children, provide PSS for disability based organisations in Amant Alasmah, and continue to identify vulnerable cases and refer them for appropriate intervention.

Our upcoming interventions will focus on the case management and referral path way for the vulnerable cases which have been facing difficulties accessing services to cope with their situations. In order to achieve this goal we are planning to improve coordination with key service providers, update mapping of services, conduct advocacy activities and coordination to include vulnerable children who have no access to services and have specific needs. We will work towards the appointment of qualified social workers from the community to be based in every CFS to monitor and identify vulnerable cases and provide PSS, and we will link these social workers with the MOSAL to ensure sustainability of their role to improve the case management and referral path way. We will also look into the appointment of a case management and referral coordinator in the project for better identification of vulnerable children, case management, referral, and follow up of the cases.



Sport activity for children in Hamdan CFS



Sport activity for children in Bain Hasiash CFS

In November 2015 the YGUSSWP agreed to support DRC in implementing their CFS in more

than 5 conflict affected provinces in Yemen, and to provide them with 63 skilled social workers to conduct the psychosocial support and case management and referral path way in the CFSs that DRC implemented and funded in 5 provinces.

### **YGUSSWP needs assistance from the IFSW, APIFSW, and IFSW Europe**

There is an urgent need to conduct special training for our social workers in PSS to rehabilitate children who have been affected physically or psychologically and for whom the CFSs activities have not been useful as they need more specialised PSS. The YGUSSWP would like the support of the IFSW, APIFSW, IFSW Europe colleagues in preparing a specialised TOT course on PSS for the 5 YGUSSWP master trainers so they could train other Yemeni social workers. If you are interested in supporting us, please contact us at email address: [yuoswp@gmail.com](mailto:yuoswp@gmail.com).

*Information and Public Relations Officer*  
**YGUSSWP**  
[amr.ygusswp@gmail.com](mailto:amr.ygusswp@gmail.com)

\*\*\*\*\*

### ***Papua New Guinea Social Workers Association Incorporated – Revived!***

#### **Reviving the Papua New Guinea Social Workers Association**

The Papua New Guinea Social Workers Association has been revived after it suspended its activities for four years since 2010. The political impasse that took place in the country in August 2011 has had an adverse flow-on effect on the location and administration of the Association's activities.

The Department for Community Development which housed the PNGSWA desk was affected by the changes in the management with the appointment of a non-social worker by the new government as the head of the department. She has no professional knowledge and appreciation of the roles and functions of the Association nor of the social work profession in general.

A group of academics from the University of Papua New Guinea's Social Work Discipline headed by the Association's current President (Mr George Wrondimi) called a meeting early this



year. And with enthusiastic social work colleagues from the field and senior social work students of the University, the meeting through a resolution appointed a Working Team which pulled together several activities for the members during the year.

The Working Team among its list of activities for 2015 was also tasked with the responsibility to produce an Annual Activity Plan for 2016. The PNGSWA 2016 Annual Activity Plan has been completed and circulated to members in November. It will be submitted for endorsement by the Association at its first General Meeting in mid-February 2016.

Among its list of activities in 2016 is to seek advice and make fresh applications for renewal of its membership to both the IFSWAP and the IFSW. The plan also contains the PNGSWA's intention to participate in the activities of both the Regional and Global bodies such as the World Social Work Day, and the Regional and International Conferences in 2016.

I would therefore like to appeal to both bodies to generously provide the PNGSWA with the list of their events for 2016 so that we can include them in our calendar of activities for 2016. I am very optimistic and equally confident that the Association will be fully re-established and become soundly operational by mid-2016.

Thank you.

**George H. Wrondimi**  
**President**

\*\*\*\*\*

***Statement by IFSW Against the Administrative Detention of our Social Work Colleagues in Israeli Prisons – 6<sup>th</sup> September 2015***

IFSW supports the call from the Palestinian Union of Social Workers and Psychologists (PUSWP) to end Administrative Detention which includes arrest and imprisonment without trial of Palestinians by the Israeli authorities. IFSW is particularly concerned that Palestinian social workers who have been conducting their work peacefully and professionally have been detained in such a manner. Two social workers under

detention are now on the 17<sup>th</sup> day of their hunger strike and international action is needed to bring an end to unjust administrative detention and to free the imprisoned social workers. The following letter was written by the IFSW Palestinian member alerting the global social work community to this problem:

“The Palestinian Union of Social Workers and Psychologists (PUSWP) are extremely concerned that the Israel authority are using Administrative Detention are detaining our social work colleagues, against basic humanitarian principles and international agreements. Administrative Detention has affected thousands of Palestinians, including our own social work members. There are currently several of our own colleagues undergoing this detention who have also taken the decision to go on hunger strike in order to convince the Israeli occupiers to end their Administrative Detention. These include our Social Work Union administrative member in Bethlehem, Nidal Abu Aker, who has been an administrative detainee for a year and a half. Along with him there is Gassan Zawhra, a social work student in Al Quds Open University. Both are participating in a hunger strike for 17 days with other colleagues who have been in Israeli detention. All were working peacefully as social workers supporting families and communities, people with disabilities and others at the time of their arrest.



Administrative Detention was initially used by the British government in Palestine in 1945 and has continued to be used by the Israeli authorities who have detained 100,000 people since 1967. Administrative Detention is against the Geneva Convention and the special agreement for civilian and political rights. Administrative Detention is imprisonment following a military order leading to the arrest of individuals without being accused of any particular crime, based on the use of secret intelligence and those subject to it are unable to present any defence as no charges have been made in open court. There has been – and

continues to be – an international campaign to cancel the use of Administrative Detention. The PUSWP requests the International Federation of Social Workers (IFSW) and all its members to campaign to save the lives of our detained colleagues from the likely possibility of death following this hunger strike and to oppose the use by Israel of collective punishment meted out on Palestinians to break their will.

Our colleagues today are fighting with their empty stomachs for their dignity and human rights!

We should not stand aside and allow this to happen, and instead we should stand together to protect them and campaign for their release as soon as possible.

In solidarity,

### *Palestinian Union of Social Workers and Psychologists (PUSWP)*



\*\*\*\*\*

### *IFSW & COSW Executive Meeting, London*

One intention of this article is to assist members to be aware of international opportunities for social work. As an AASW member you are also a member of the IFSW. The AASW e-bulletins have a link to IFSW newsletters which share news from social work colleagues from around the world.

Another is to inform you of COSW's work. While in London recently, I was delighted to prompt a meeting of the COSW Executive. It was a great opportunity to catch up with British colleagues who are highly engaged in wide ranging international work. Congratulations to Terry Bamford on the publication of his book, 'A Contemporary History of Social Work', Publisher Policy Press, 2015.

We shared news of initiatives and projects. For example the Northern Ireland Social Care Council,

**www.niscc.info**, has developed an opportunity for clinicians seeking CPD points to have their work effort and experience recognised as a legitimate learning and development activity, in lieu of paying to attend training. Most Australian social work clinicians have limited career paths. So this appears to be a welcome CPD development.



Naomi with David, Terry and Nigel in London

Another is to inform you of the stark reality for colleagues in developing countries of the very low rates of pay for public servants. Many report that they must earn income from alternative sources in order to remain in their paid social work positions. While I appreciate the generosity of Australian colleagues, I also urge you to stretch that same heart to projects and work which our international colleagues undertake. While it is not always straightforward to do so, given the costs associated with transferring money internationally, we remain aware of the value in doing so.

Another intention is to inform you of an ongoing project of COSW and invite your support for a Young Carers Project, a project of the East Africa IFSW and African COSW representatives. At the London meeting I wondered how Australians can assist with African initiatives such as this, given that a UK trust is also involved with funding this project. Enquiries regarding this are welcome to **nspencer@csu.edu.au**.

Another intention is to let you know of the Commonwealth Peoples' Forum (CPF), the civil society forum held in conjunction with the Commonwealth Heads of Government Meeting (CHOGM). It was scheduled from 23 to 26 November 2015 in Malta. The theme was 'What Makes Societies Resilient?' The forum was a chance for representatives of civil society from across the Commonwealth to share ideas and

engage with government leaders. I have been invigorated attending several CPF and encourage you to consider leave in Malta in November! <http://cpf.commonwealthfoundation.com/cpf-malta-2015/>

The NSW AASW Branch Committee learned from a recent CPD survey that the majority of social workers in NSW need to take leave to fulfil their training and development requirements. This can be irritating or a great incentive to contribute to and learn from our international colleagues.

I enjoy my social work identity and hope you do too. How are you 'talking it up' and is there something you can imagine doing, but just haven't managed to?

Yours in Social Work,

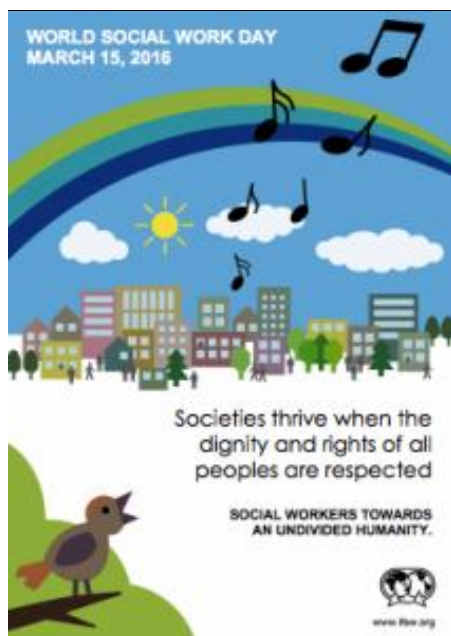
**Naomi Spencer**  
*NSW Branch Committee Member and COSW Executive Member*  
20 July 2015

\*\*\*\*\*

## Upcoming Events in 2016...

### ***Celebrate World Social Work Day 2016!***

Let's hear from you what's being planned to commemorate this special day on 15<sup>th</sup> March 2016 for social work and social workers all around the globe. The theme for 2016 is *Social Workers Towards an Undivided Humanity*.



## Upcoming Social Work Conference in 2016



SWSD2016 Secretariat  
B1F Korea National Social Welfare Bldg., 14  
Mallijaer-ro, Mapo-gu, Seoul, Korea 121-706  
Tel: +82-566-6031/6033  
Fax: +82-2-566-6087  
e-mail: [seoul@swsd2016.org](mailto:seoul@swsd2016.org)

### ***Building Resiliency in the Face of Disasters: A Proposed Design***

Ponce de Leon Garden Resort, Puerto Princesa  
City, Palawan, Philippines  
March 2-4, 2016  
Abstract Submission deadline: February 10, 2016  
e-mail: [paswittraining@gmail.com](mailto:paswittraining@gmail.com)

### ***The Asian Conference on Education & International Development 2016 ACEID2016***

Art Center of Kobe, Kobe, Japan  
Sunday, April 3 - Wednesday, April 6, 2016  
Abstract Submission Deadline: February 1, 2016  
Registration Deadline for Presenters: March 1, 2016

### **Conference Theme: "Education and Social Justice: Learning For Global Diversity"**

In this conference – one of a series of five held in 2016 on education and social justice – participants are invited to explore and question the ways in which education can become an instrument for learning through and for global diversity. Abstracts should address one or more of the streams below, identifying a relevant sub-theme:

- Diversity in Global Contexts
- Education and Socio-Economic Development
- Education and Development: Local and Global/Domestic and International
- Education: Public & Private Partnerships
- Economics and Management of Education
- Literacy: Poverty and Sustainability.

---

*To be announced soon...*

*IFSWAP-APASWE Regional Joint  
Conference 2017 in Shenzhen, China.*

We now have rich news on our Facebook.  
Follow us on  
<https://www.facebook.com/IFSW-Asia-Pacific>.

## IFSW Asia Pacific Regional Committee

<b>President:</b>	Mariko Kimura (Japan)
<b>Member-at-Large:</b>	Rose Henderson (New Zealand)
<b>Secretary:</b>	Irene Leung (Hong Kong)
<b>Treasurer:</b>	Michiko Hirata (Japan)
<b>Members:</b>	Sung-Kyung Kang (Korea) Karen Healey (Australia) Eva Ponce de Leon (The Philippines) Sharima Ruwaida Abbas (Malaysia) Elsie Lee (Publications Secretary, Malaysia)
<b>Ex-Officios:</b>	Ng Shui Lai (Human Rights, Hong Kong) Elsie Lee (Ethics Representative, Malaysia)
<b>Regional Advisor:</b>	Justina Leung (Immediate Past President, Hong Kong)

Editor: Elsie Lee (Malaysia)

Layout: Jodi Johnstone (Australia)

Publisher: Griffith University for IFSW Asia Pacific Region (Australia)

Note to Contributors:

Please send items, stories and articles preferably in MS word format as well as photos to the Editor, Elsie Lee at [elsilee@gmail.com](mailto:elsilee@gmail.com).

---